

AGENDA SUPPLEMENT (2)

Meeting: Westbury Area Board
Place: The Laverton Hall, Bratton Rd, Westbury BA13 3EN
Date: Thursday 4 February 2016
Time: 7.00 pm

The Agenda for the above meeting was published on 27 January 2016. Additional documents are now available and are attached to this Agenda Supplement.

Please direct any enquiries on this Agenda to Roger Bishton, of Democratic Services, County Hall, Bythesea Road, Trowbridge, direct line 01225 713 035 or email roger.bishton@wiltshire.gov.uk

Press enquiries to Communications on direct lines (01225)713114/713115.

This Agenda and all the documents referred to within it are available on the Council's website at www.wiltshire.gov.uk

7. **Partner and Community Updates** *(Pages 1 - 4)*

Wiltshire Police – report for February 2016



WESTBURY AREA BOARD **4TH February 2016**

Welcome to the third report from your Community Policing Team (CPT).

We are continuing to develop the CPT pilot across your Policing area and are currently in a period of review and assessment. We are looking at ways to further develop our approach and continually look to improve on our performance. We are committed to delivering local Policing in your area that addresses the threats, harms and risks in your local community whilst working within the current austerity measures which are quite challenging. We are fluid in our approach and will look to evolve as demand and circumstances develop. It is important to hear your views in how we can find the balances and address the issues that affect your communities. Please continue to leave your feedback at feedback@wiltshire.police.uk

I would like to introduce you all to the community messaging website; <https://www.wiltsmessaging.co.uk/>. This is a website open to everyone, that the Police and Crime Commissioner has introduced in order to provide local communities with information about what is affecting their area. The key highlights are:

- FREE messages from your local police officers about policing and crime matters in your area
- You can receive free messages by email, text or voicemail
- You can choose which organisations to receive messages from and the type of information you receive
- Currently messages are being sent by Wiltshire Police, Wiltshire and Swindon Neighbourhood Watch and Action Fraud. This will soon be extending to include other watch schemes, including Horse and Farm Watch, and potentially partner agencies in the future
- You can reply to messages from your local officers to help them better police your area, such as by responding to police appeals for information
- You can also join a neighbourhood Watch scheme in your area or request to start a new one

feedback@wiltshire.police.uk

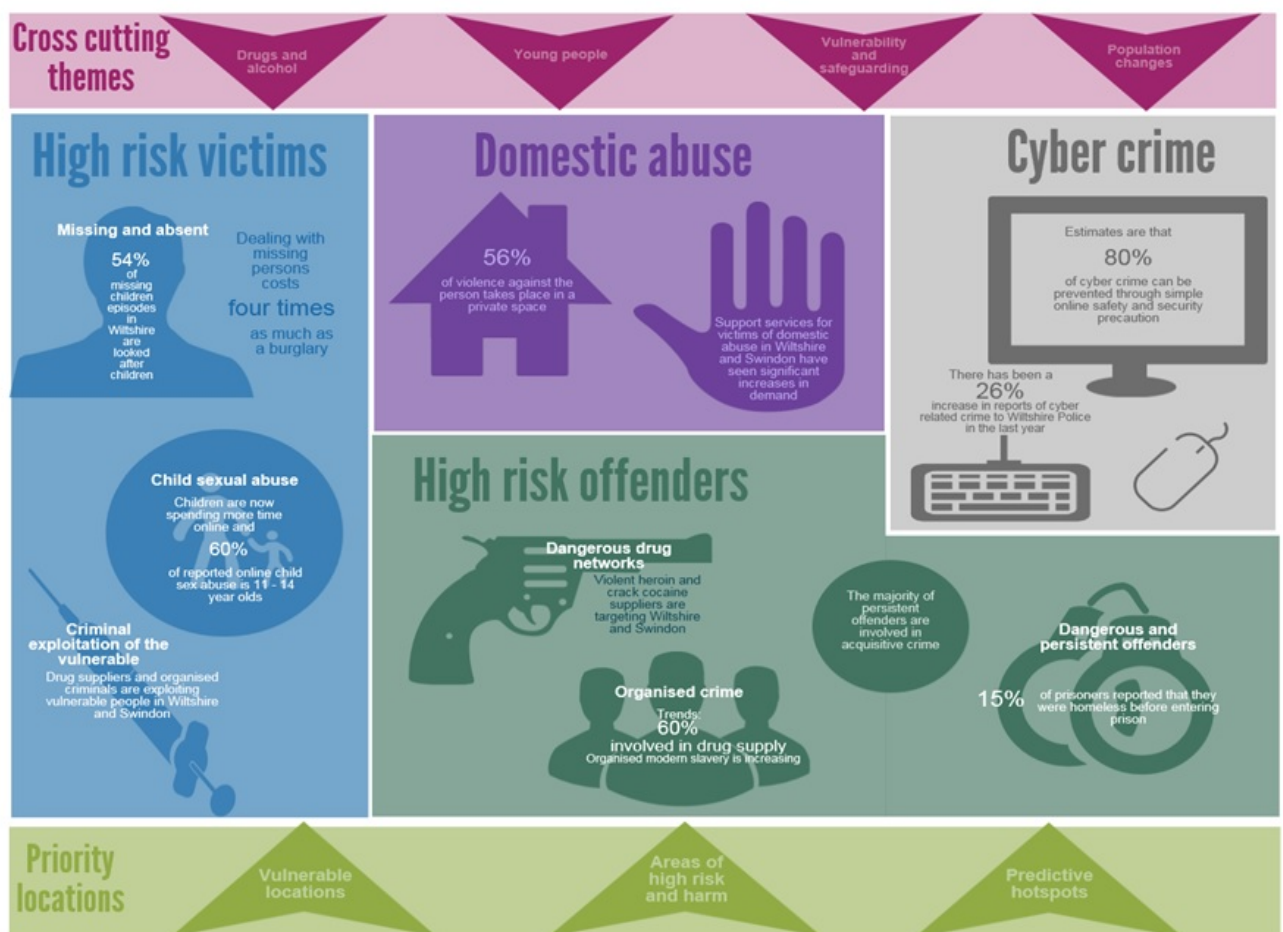
We are currently want to enhance community messaging by ensuring suitable training is given to my staff. The website itself if very simple and straight forward to navigate and I would encourage you to have a look and sign up.

Team updates

We are also pleased to welcome our new Deputy Head , Sgt Louis McCoy. Louis has joined us from the Chippenham area and brings with him 13yrs of Policing experience having worked in a variety of roles across Wiltshire Police. Louis is very pleased to have joined the team and is looking forward to supporting and developing the team as well as working with our local community. Please follow Louis on his twitter account for updates on community matters and information around our daily Policing activities. [@WiltspoliceLM](#)

Wiltshire Control Strategy

We are continuing to base our Policing activities on the control strategy and working with the 4 P's, Prevent, Pursue, Protect and Prepare. Under this strategy we are looking to maintain our consistent approach to addressing the threat, harm and risk that causes the greatest harm to your communities and this is a daily evolving situation that requires a degree of fluidity.



Our Control Strategy has been created to describe the current and emerging threats that are of the greatest impact to our Communities. This is set annually following the analysis of threats, harms and risks. You will have seen that we have moved away from a statistics lead report as this doesn't always capture the true context of the threat, harm and risk but we will inform you of any key issues in your areas. We are still able and actively do review figures, trends and intelligence and should anything present itself as an emerging issues, we will endeavor to address it at the earliest opportunity.

My theme for this report will focus on missing and absent.

Missing and Absent

The importance and impact of a missing person should not be underestimated.

The National Crime Agency's (NCA) missing persons bureau reports that more than 300,000 reports of missing people are received by the police service every year, which equates to more than 800 reports a day.

With estimates suggesting that each report costs between £1,325 and £2,415, the financial costs of responding to this volume of reports are significant. However, with more than 750 fatal cases each year and a far greater number for whom missing is an indicator of being at risk of harm, the human cost is incalculable.

- Missing is defined as anyone whose whereabouts cannot be established and where the circumstances are out of character or the context suggests the person may be subject of a crime or at risk of harm to themselves or another.
- Absent is defined as a person not at a place where they are expected or required to be and there is no apparent risk.

It should be remembered that a person going missing could be a symptom of a much bigger issue and that person could be connected to criminality either as a victim or as an offender.

Nearly two-thirds of all reports relate to children and young people under the age of 18. We have a dedicated missing persons co-ordinator who works within the multi-agency safeguarding hub (MASH) at County Hall, Trowbridge and we actively link in with all relevant departments that we feel could benefit a young person who has been missing to help and support them from going missing again. We look to debrief each missing person so we can better understand them and the reason that they went missing.

It can be extremely worrying for parents when their child goes missing and it's a fine balance between allowing them their independence to grow up and make mistakes and safeguarding them from harm. Some key questions to ask yourself about your child:

- Do you know who they are speaking to online?
- Do you know who their friends are?
- Do you know where their friends live?
- Do you know what is going on with their social life?
- Do you know if they are being bullied?
- Do you know if they are socialising with older males/females?
- Are they a victim of crime?

Our public protection department holds the responsibility for our missing persons procedures, protocols and development and in the next few months we are launching a new platform on which to record all our missing person details within Wiltshire Police. This is with a view to developing our approach and good quality work we already undertake. We work closely across a number of partner agencies when appropriate to investigate missing persons reports and will look to find out the underlying reason why that person went missing and what can be done to prevent it in the future.

Below are 2 useful websites that can offer help, support, advice and guidance should someone you know go missing.

<http://www.missingpeople.org.uk/> <http://missingpersons.police.uk/>

Local Crimes

For a detailed breakdown of the crime in your area visit...

<https://www.police.uk/wiltshire/>

James Brain

Community Policing Team Inspector

Trowbridge & Warminster

feedback@wiltshire.police.uk